



International J/70 Class Association

Closed Class Rules - Don't change the as-molded shape

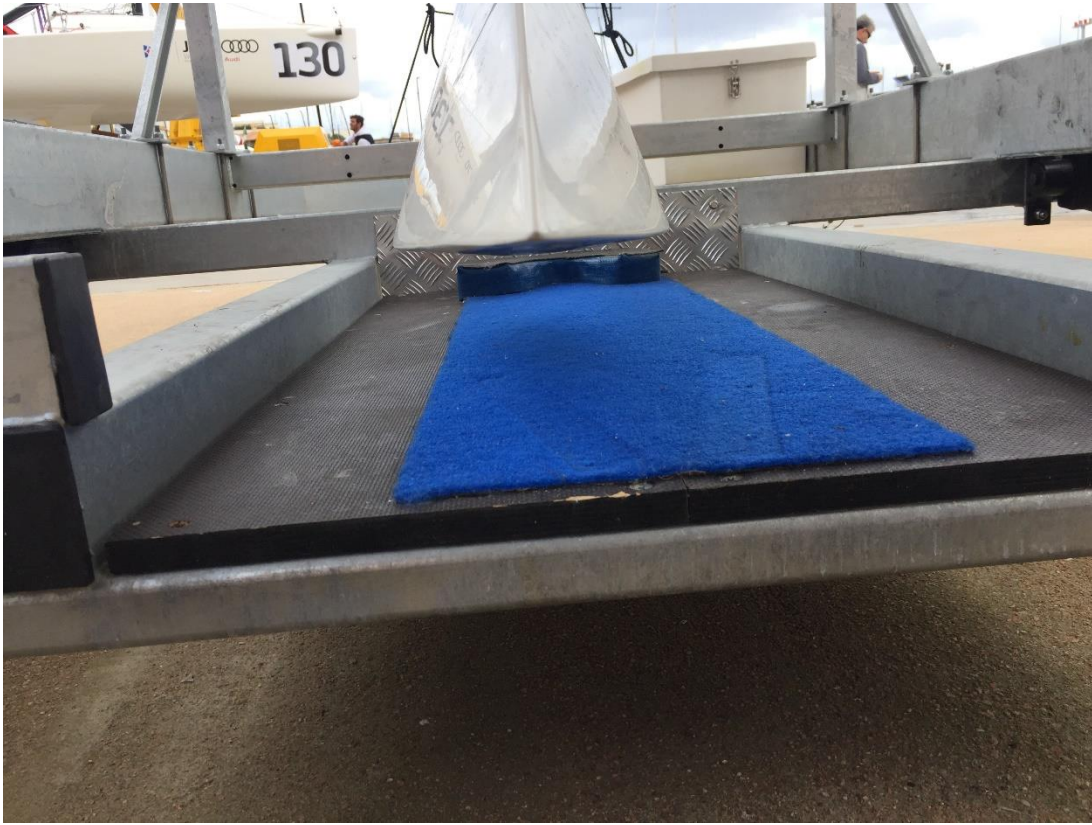
At the 2017 J/70 World Championship, every boat was put through a consistent inspection process where each boat is compared to the manufacturer's standard and a random sample as described in Class Rule B.3, "Equipment Inspection". The J/70 Class has Closed Class Rules where you cannot make changes unless they are specifically allowed within the Class Rules or Building Specification.

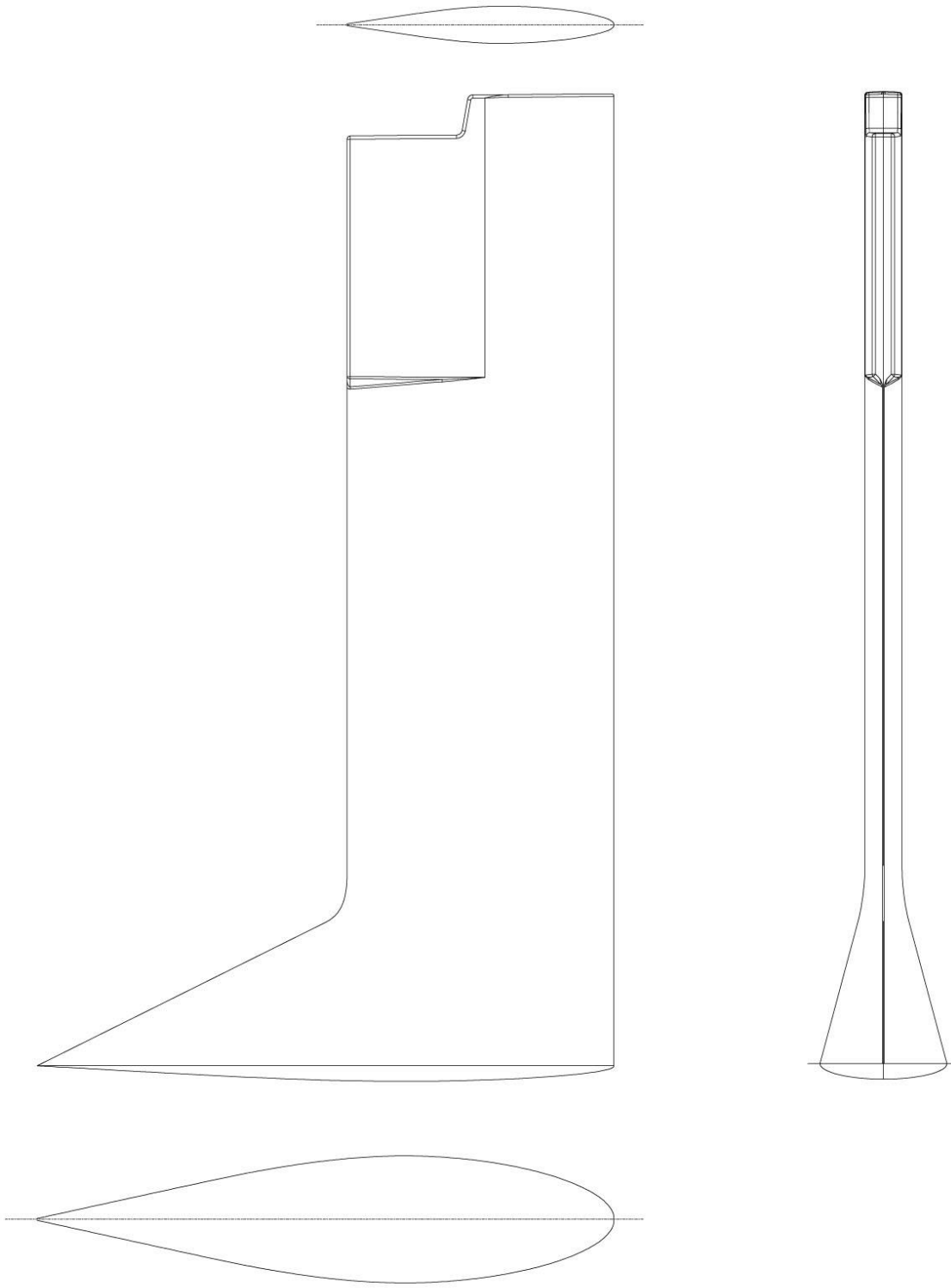
During the 2017 World Championship prerace inspections, the Technical Committee discovered that the as-molded shape of the keel had been changed on some boats presented for inspection. As stated in the introduction to the Class Rules, after parts have left the manufacturer, they may only be altered as permitted in the Rules. The keels in question were in violation of Class Rules E.2.1 (a) and C.8.1 (c), which states that the as-molded shape shall not be altered.

The J/70 is a manufacturer-controlled Class, as described in the introduction of the Class Rules. When a boat has changed the as-molded shape of a part in Section D, E or F in a way other than described in Section C, the Manufacturers Declaration may become invalid. At this point, the only remedy is through the Licensed Manufacturer (LM). The seven boats that were modified at the World Championship must now return their boats to the LM to be corrected at the owners' cost.

The photos below show examples of the modifications. You can see how these keel bulbs were changed by adding material around the bottom of the bulb and trunk, changing the overall girth while making the bottom of the keel flat.







The J/70 keel as designed